

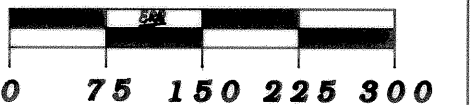
THIS PROPERTY IS SUBJECT TO ALL EASEMENTS, RIGHTS-OF-WAY, OR RESTRICTIONS, WHETHER RECORDED OR IMPLIED.

727 Cambridge Road
Coshocton, Ohio 43812

LANDMARK SURVEYS, INC.

EARL R. DONAKER, P.S.

tel: (740) 623-0993
1-800-842-3264



SCALE: 1" = 150'
ORIGINAL PLAT 18" X 24"

- - All 5/8" steel pins set are 30" long, plastic cap marked "ERD 7142"
- - 1/2" steel pin of record
- - stone of record
- - 5/8" steel pin of record
- ▲ - point

NOTE:
All distances between monumentation were measured.
Distances to points were calculated.
Record distances as marked. (Rec.)

BOZ FARM SUBDIVISION
J.J. DETWEILER ENTERPRISES, INC.
OR253/752 OR253/756
Parcel #: 42-00390
187.553 Ac. ±

Pertinent documents: Tax maps:

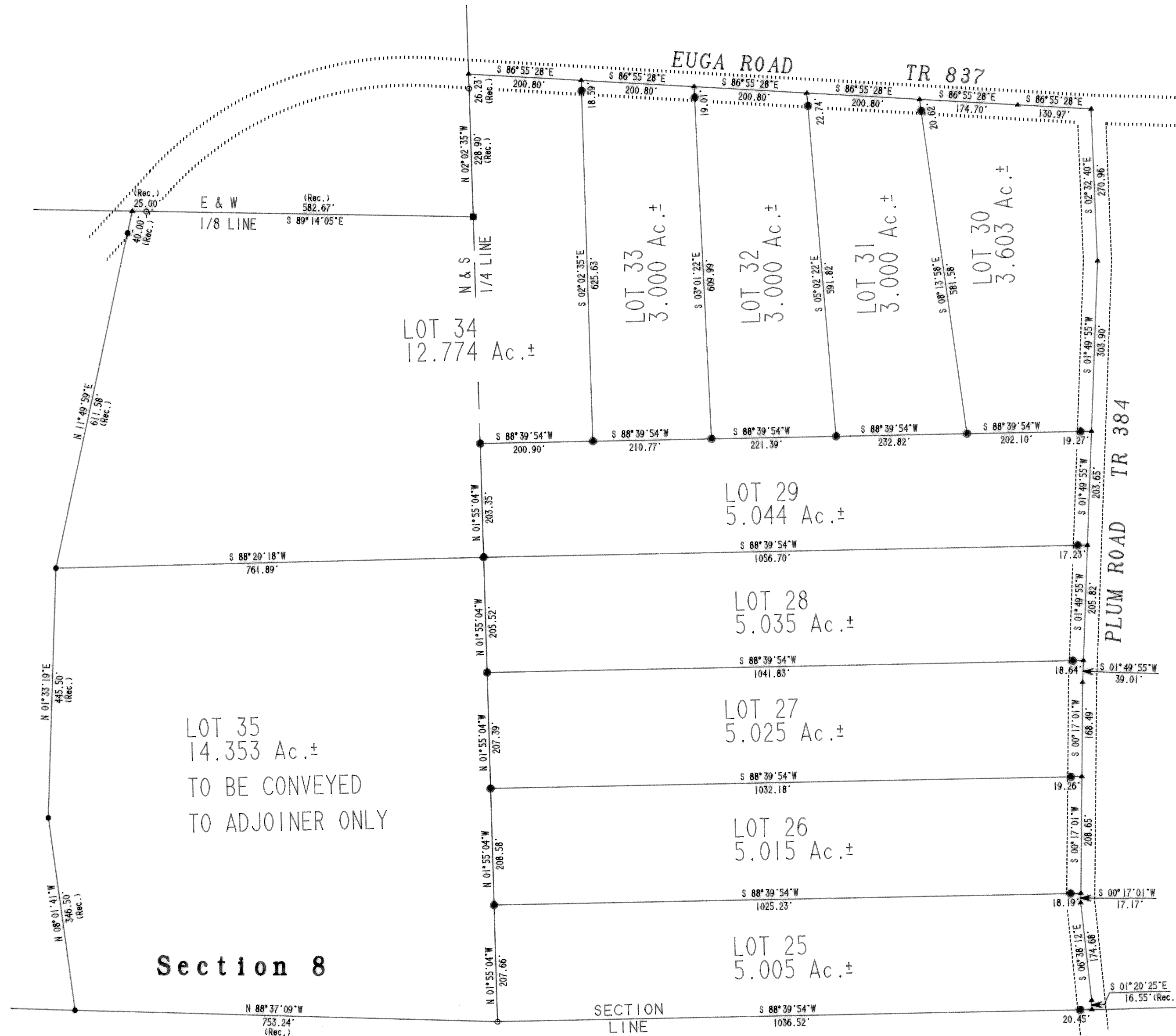
Deeds: 29/472, 5/116

Official Records: 253/752, 253/756

Surveys by: Earl R. Donaker

See plat of 187.553 Ac. August, 2000

Bearings are based on OR253/752 N. 114° 59' E. and are for angular calculations only.



Delores McVey
OR63/982

Section 8
Section 13

SHEET 1: LOTS 14 THROUGH 24
SHEET 2: LOTS 25 THROUGH 35
SHEET 3: LOTS 1 THROUGH 13
"Remove not the old landmark." Proverbs 23:10

J.J. DETWEILER ENTERPRISES, INC.	
SECTION 8	
FIRST QUARTER, T 4 N. R 3 W.	
UNITED STATES MILITARY LANDS	
TOWNSHIP: WHEELING	
COUNTY: GUERNSEY, OHIO	
JANUARY, 2001	JJ1146S2
SHEET TWO OF THREE	